

Long QT Syndrome (LQTS) & Brugada Syndrome Family History (Pedigree) Information Sheet

These conditions are inherited as autosomal dominant disorders. This means that it is passed down in families from parent to child. In a family that exhibits autosomal dominant inheritance multiple cases would be seen in consecutive generations. For example, there is a 50% chance or a 1 in 2 chance that your children will have LQTS. This is because you would have a 50/50 chance of passing on the chromosome with the change that causes LQTS. However, since LQTS can be without symptoms it is unknown how many gene carriers will show symptoms of the disease.

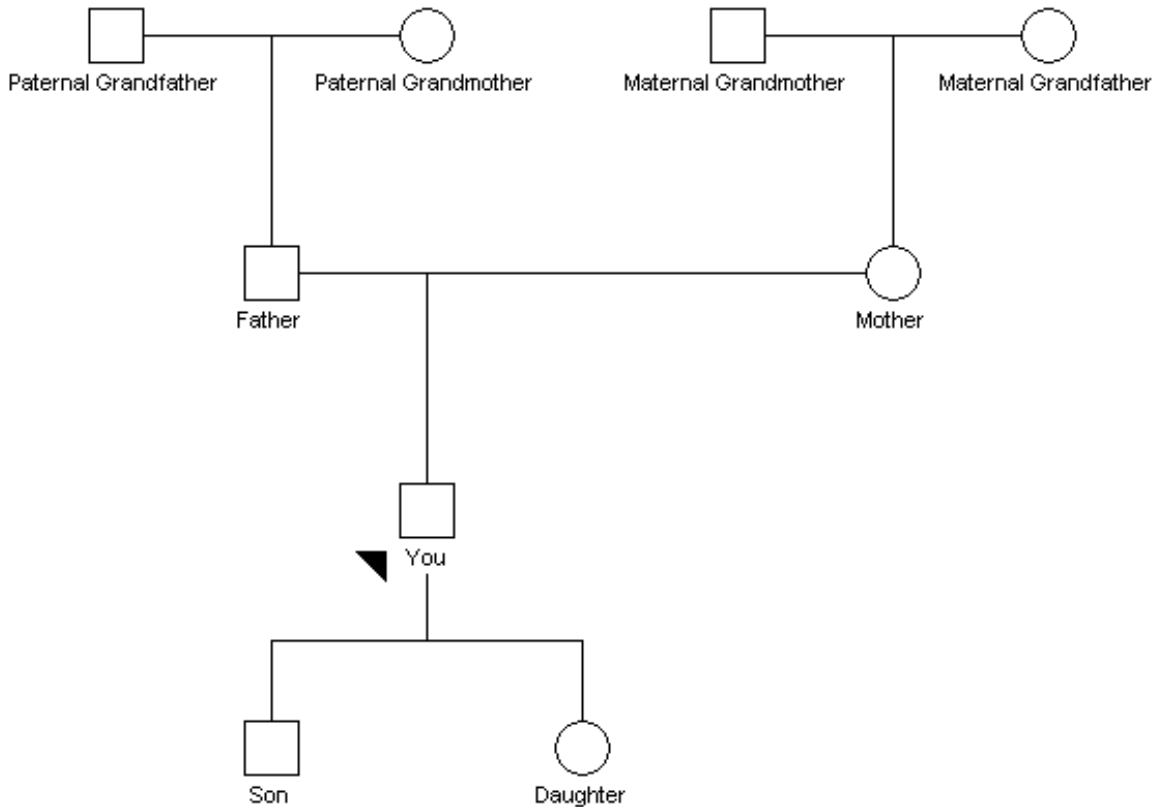
Based on these conditions being hereditary diseases it is important to know and document your family history. We outline how to do this below:

1. Collect information (from www.nsgc.org)
 - Make list of all of your family members.
 - Use this sample family tree as a guide to draw your own family tree or you may create an electronic version at <https://familyhistory.hhs.gov/>
 - Write your name at the top of your paper and date you drew your family tree.
 - In place of the words father, mother etc., write the names of your family members.
 - When possible, draw your brothers and sisters and your parents' brothers and sisters starting with the oldest to the youngest, going from left to right across the paper.
 - If dates-of-birth, ages or dates of death are not known, guess (e.g. 50's, late 60's)
2. Document the following LQTS related information about your family members. Has anyone in your family including all your aunts, uncles, grandparents and cousins on both sides)
 - Has anyone in your family been diagnosed with long QT syndrome or Brugada syndrome?
 - Anyone with fainting episodes or dizziness?
 - Anyone with palpitations or irregular heart rhythms?
 - Anyone followed for seizures or a seizure disorder?
 - Has anyone in your family died young or suddenly?
 - Anyone died while swimming or in a car accident?
 - Anyone born with deafness?
 - Any children die from SIDS?
 - Does anyone have a pacemaker or defibrillator?

Name: _____

Date: _____

Family Tree (Pedigree):



3. In many cases verification by medical records or autopsy is helpful in confirming a diagnosis. Make a list of those family members who have LQTS or LQTS related symptoms here.

Collect Records on these family members:

_____	_____
_____	_____
_____	_____
_____	_____